

Infilink- CAT 5e Patch Panels

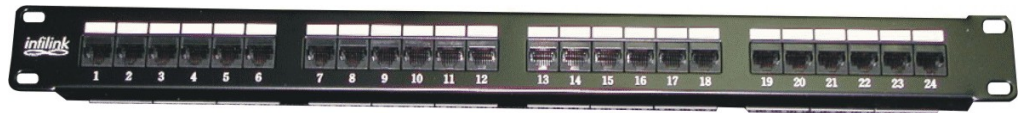
The affordable and high performance 16 and 24 port patch panel for use in any size LAN configuration



Key Features

- ❑ Allow easy circuit identification using the Infilink labeling
- ❑ Crowns to Circuit protection
- ❑ In full Compliance with T568A and T568B, CAT 5e Performance standards
- ❑ Fits to any Standard 19" rack
- ❑ No Termination Tools required
- ❑ Extended Warranty

At the office work area or the harsh industrial environments, **Infilink** patch panels are designed to mount in any standard 19" width rack. These patch panels offer a sleek, elegant appearance.



Infilink Enhanced Category 5 Patch Panels meet or exceed all of the proposed TIA requirements for Category 5e. **Infilink** Enhanced Category 5 patch panels simplify inventory management by providing a universal label for both T568A and T568B wiring patterns which allows connection with 22-26 AWG wires and are offered in 24 and 16 port varieties. The cable ties, mini punch down tool and connector crowns provide tools for better management of cables.

COMPANION PRODUCTS

Consider these related **Infilink** products as factors in your network planning

- ❑ Infilink CAT-5e & 6 Cables
- ❑ Infilink RJ-45 Connectors
- ❑ Infilink Faceplates
- ❑ Infilink Wall Boxes
- ❑ Infilink Boot Covers
- ❑ Infilink Patch Cables
- ❑ Infilink CAT-6 Connectivity

| SPECIFICATIONS | PERFORMANCE |
|---|---|
| PHYSICAL DIMENSTIONS (LxH) | 19" x 1U |
| MECHANICAL | |
| <ul style="list-style-type: none"> • Plug insertion life • Plug and Jack contact force • Plug retention force • Temperature | 750 Cycles 100 grams min, using FCC approved plug 30 lbs minimum -40°C to 68°C |
| ELECTRICAL | |
| <ul style="list-style-type: none"> • Current Rating • Insulation Resistance • Contact Resistance • Transmission performance | 1.5 Amps 500 Mega-Ohm minimum 20 Milli-ohm maximum 100 Mbps |
| STANDARDS | |
| <ul style="list-style-type: none"> • UL • FCC • TIA/EIA | UL Certified Part 68 568-B.2 (Category 5e transmission performance) |

FOR PRODUCTS INFORMATION

| | |
|--|--|
| World Wide Web | http://www.infilinktechnologies.com |
| E-mail | customercare@infilinktechnologies.com |
| U.S. and Canada - Tel | (415) 482-6681 |
| U.S. and Canada - Fax | (415) 883-2840 |
| Eastern Europe, Middle East, and North Africa - EMEA - Tel | (971) 4 355-8445 |
| Eastern Europe, Middle East, and North Africa - EMEA - Fax | (971) 4 359-3954 |

ORDER CODES

| | |
|--|-----------|
| Infilink-24 port Cat. 5e Patch Panel UTR RJ-45 | IP-PP5E24 |
| Infilink-16 port Cat. 5e Patch Panel UTR RJ-45 | IP-PP5E16 |

Infilink Technologies
San Rafael, California U.S.A.

www.infilinktechnologies.com
www.infilinktech.com